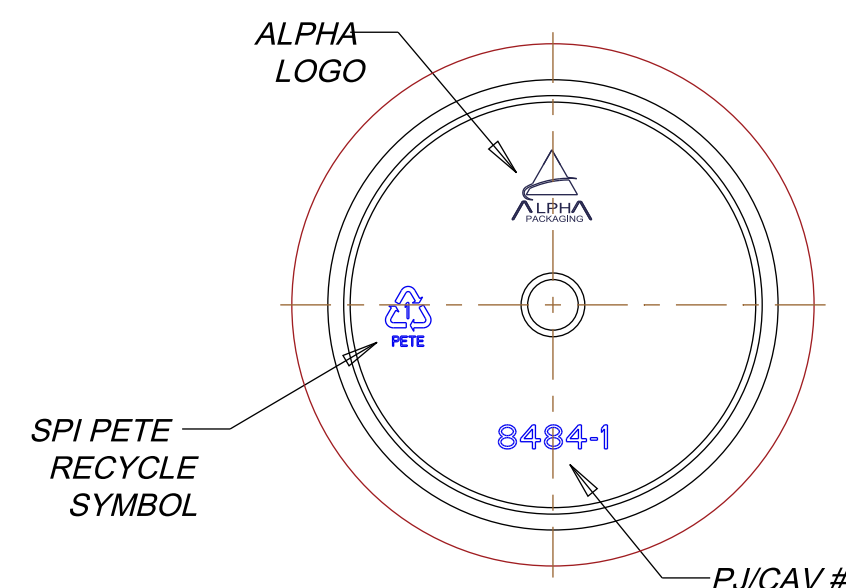
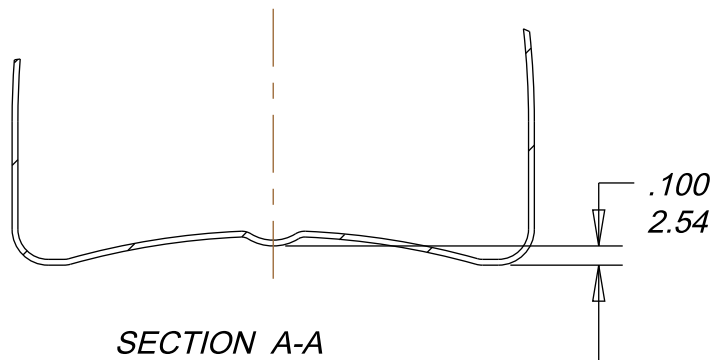


REFERENCE DIAMETER 2.720



SINGLE COLOR, NON REGISTERED SCREEN PRINT ONLY




**DECORATING LIVE AREA PRELIMINARY, LINE TRIALS REQUIRED.
LIVE AREA DIMENSIONS SUBJECT TO CHANGE WITHOUT NOTICE**

PRELIMINARY DRAWING - The intention of Alpha Packaging will be to produce a bottle exactly as indicated by this print. Alpha will prototype this bottle to ensure 100% customer satisfaction before producing complete tool set.

SCALE 1-1 Actual Size Technigraph
CONFORMITY
 APPROVED: _____ DATE: **05/17/16**
The ART & TECHNOLOGY of PACKAGE DECORATION PHONE 507-616-3030 FAX 507-616-4470
TECHNIGRAPH STOCK NUMBER: _____ **DECO TEMPLATE ESTIMATE**

This preliminary decorating template is for the bottle defined per
 • **Alpha drawing number P0400JRPW053BL A** •
 For specific bottle details please refer to the latest engineer drawing/revision for this container.

NPD # 8484		DISCLAIMER: Alpha Packaging assumes no responsibility for form, fit and function of closures, accessories, and/or shelf life and compatibility of intended contents with this bottle.			
© Alpha Packaging, Inc. All measurements are in inches, [mm]	Color	Min. Thk (in)	Weight (g)	Overflow (cc)	Revisions
		TBD	37.0 ± 3.0	434 ± 11	a Removed rib and adjusted shoulder angle. 12-21-15 RAB
Tolerance: Where not shown	NECK FINISH	M53SP400			 Packaging, Inc. (314) 427-4300--(800) 421-4772 Scale: 1.000 Drawn By: RAB Date: 08-Dec-15 400cc PINCH WAIST Approved By: _____ Drawing NO: P0400JRPW053BL
Decimal ±0,05 [1.27] Angular ±1°	MATERIAL:	PET			