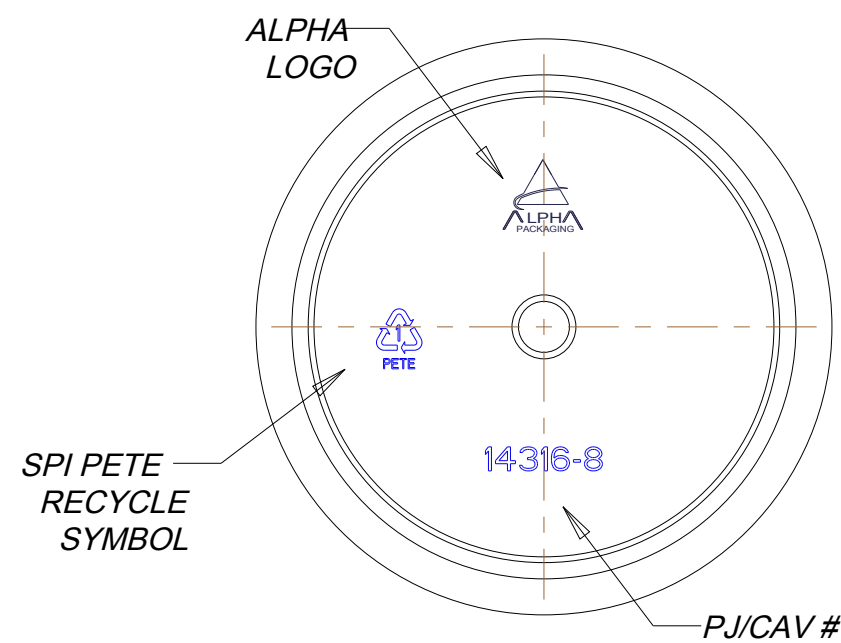
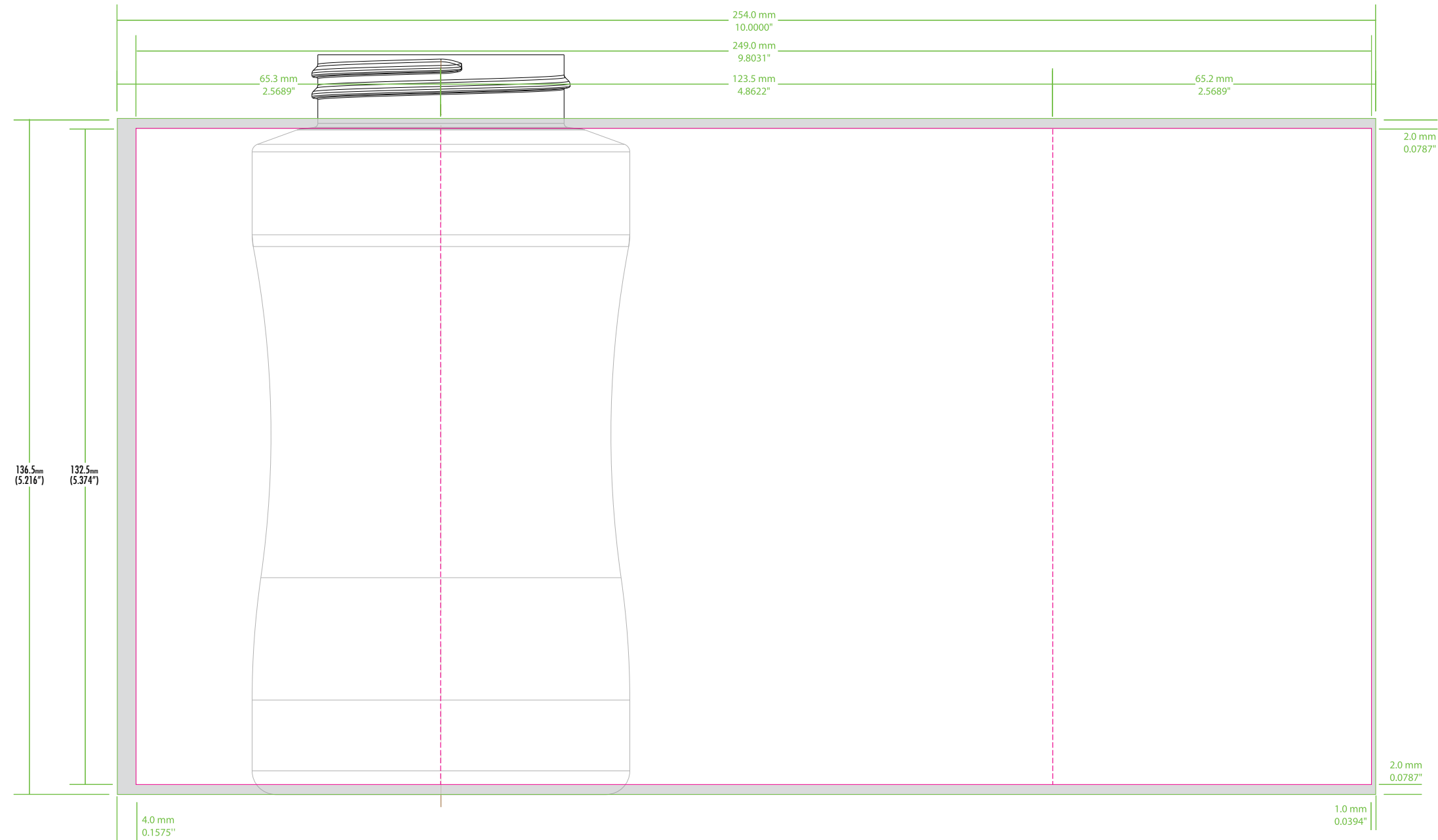
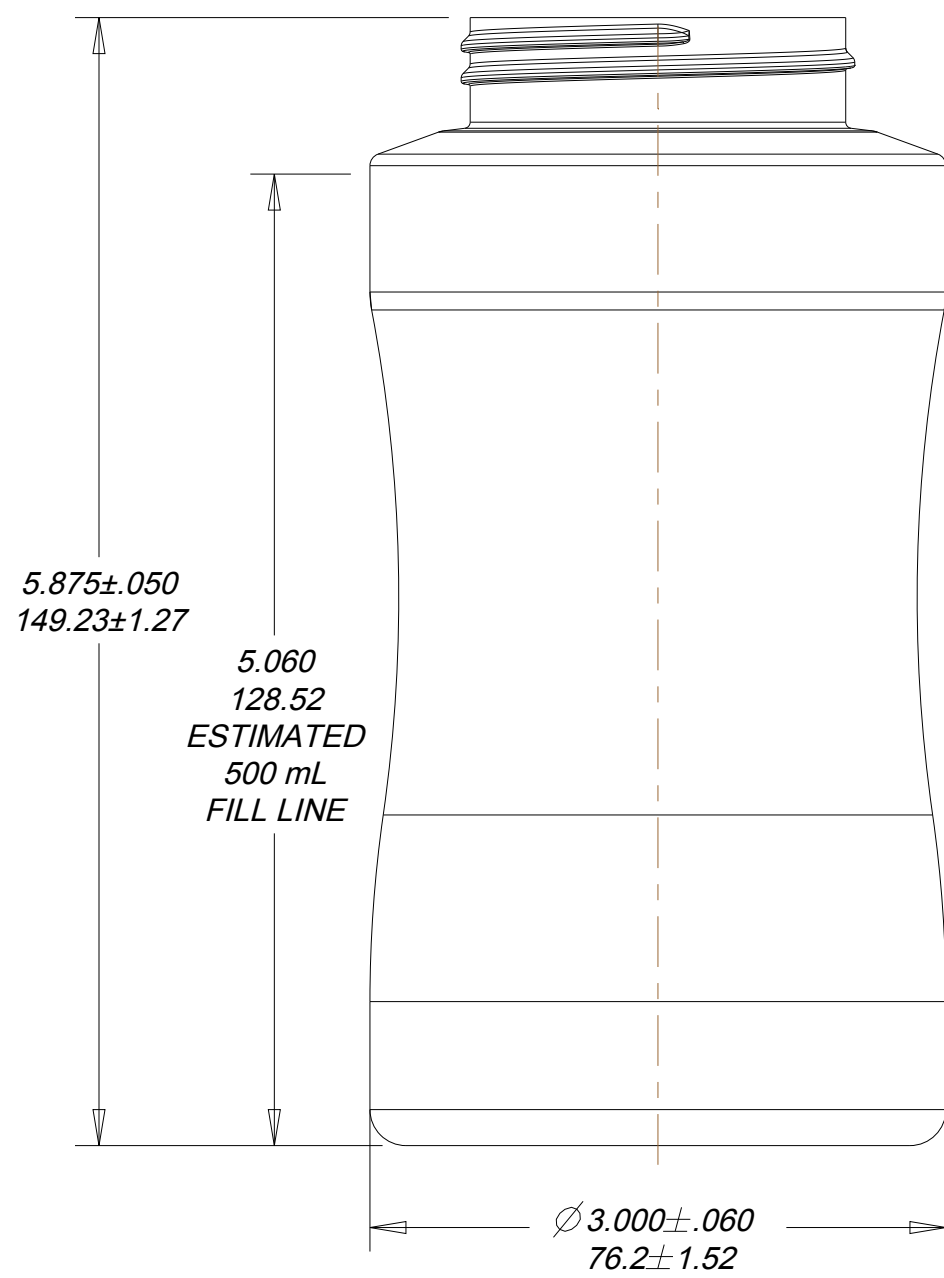


REV	E.C.N.	DESCRIPTION	BY	DATE

$$3.00 D \times \pi = 9.424 (239.3696) \wedge 234\text{mm} + 20\text{mm} = 254\text{mm}$$



Tim,
 I have submitted the request for the dieline. In the meantime, here are the numbers that we came up with for a general estimate. Will get you the dieline soon.
 Cut Length – ~~129mm~~ (ttt changed to 138.5 based on citrus blast sample/proportion)
 Web Width – 254mm
 Layflat – 123.5mm

APPROVED: scale: 1-1 actual size **Technigraph**
PRELIMINARY DATE: **05/09/19**
 THE ART & TECHNOLOGY OF PACKAGE DECORATION
 TECHNIGRAPH STOCK NUMBER:
 www.technigraph.net 507-454-3830

TOLERANCES: +2mm / - 0mm
Preliminary Lay Flat: 107 mm (+2 mm / - 0 mm)
Preliminary Slit Width 254 mm (+2 mm / - 0 mm)
Preliminary Cut Length 138.5 mm (+1 mm / - 0 mm)

© Alpha Packaging, Inc.		DISCLAIMER: Alpha Packaging assumes no responsibility for form, fit and function of closures, accessories, and/or shelf life and compatability of intended contents with this bottle.	
Specification General:	Min. Thk (in.)	Weight (g)	Overflow (mL)
All measurements are in inches, [mm]	.008	52.0± 3.0	545± 13
Base engraving is subject to change location & size.	(314) 427-4300 / (800) 421-4772 Scale: NPD #: Drawn By: Date: 1.000 14316 RAB Dec-07-17 DwgRev		-
Tolerance where not shown: Decimal ±0,05 [1,27] Angular ±1°	NECK FINISH:	M53SP400	
	MATERIAL:	PET	
	Approved By:	Drawing Number: P0500JRPW053BL	